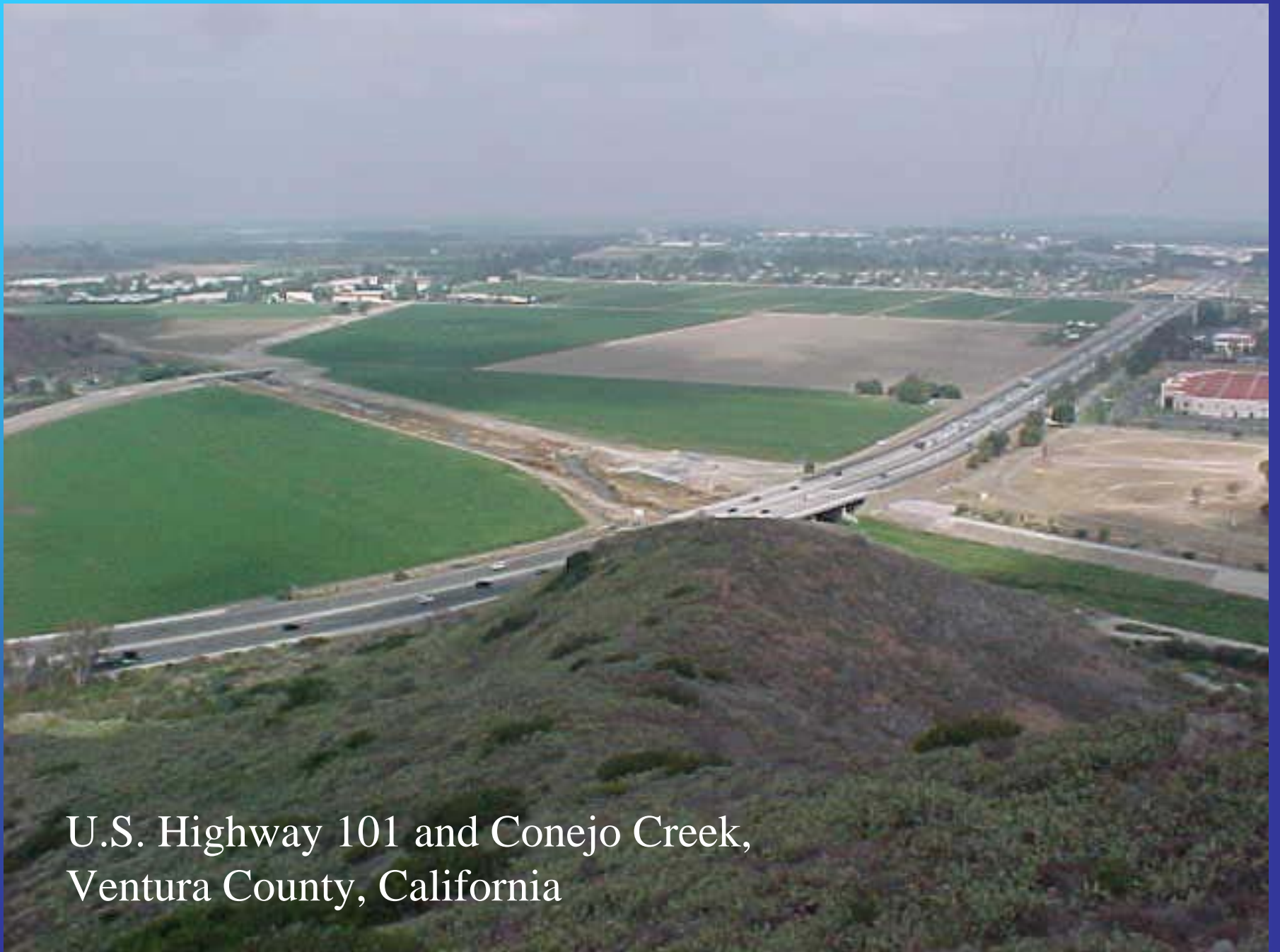


Water TAP

Background Information for
FCGMA Strategic Advisory Group
April 24, 2008



U.S. Highway 101 and Conejo Creek,
Ventura County, California



Conejo Creek Diversion Project

Santa Rosa Valley

City of Camarillo

Transmission Line to Pleasant Valley County Water District

Transmission Line to Camrosa Distribution

Creek Diversion Structure & Pump Station

Highway 101

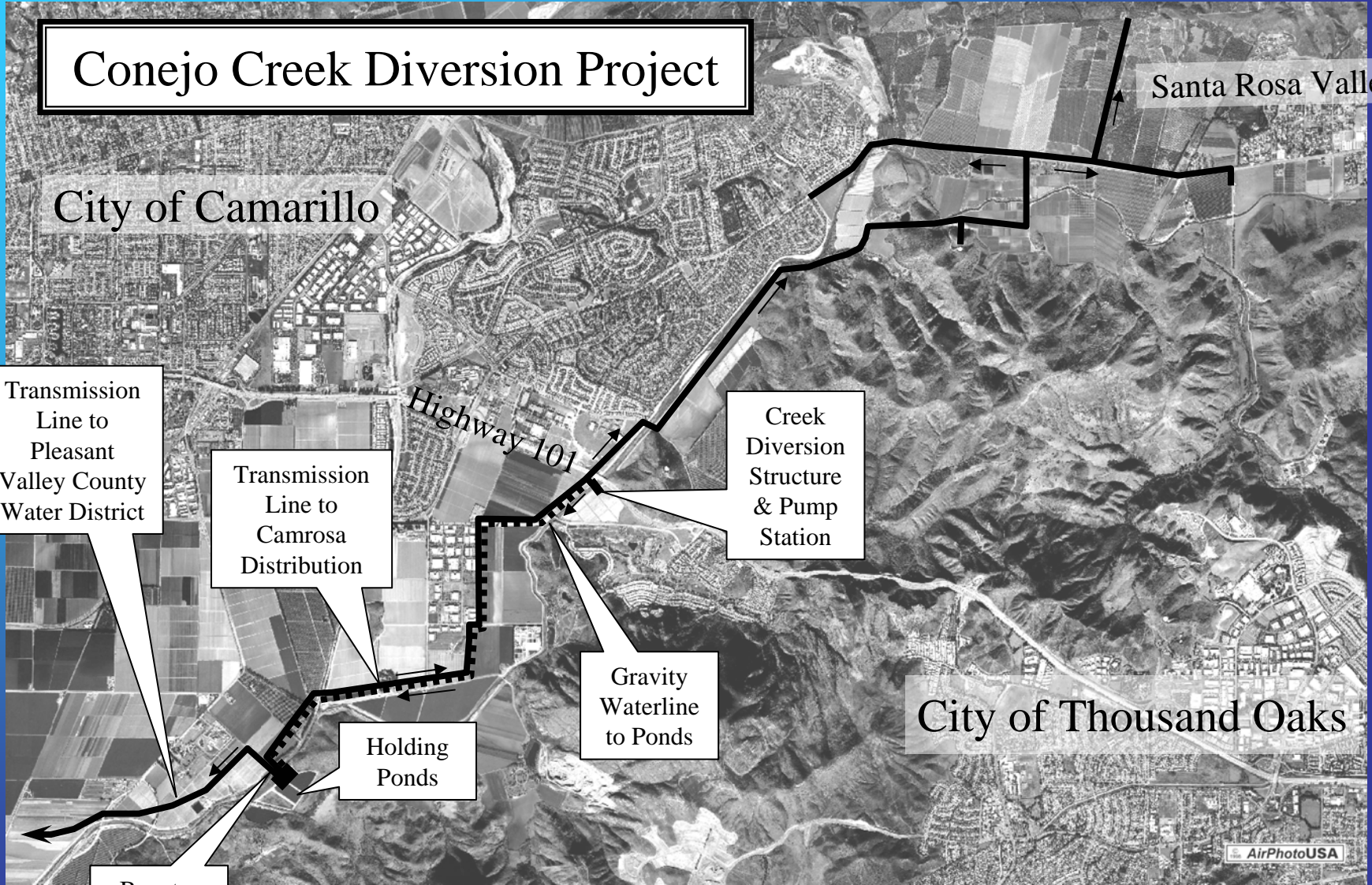
Gravity Waterline to Ponds

Holding Ponds

City of Thousand Oaks

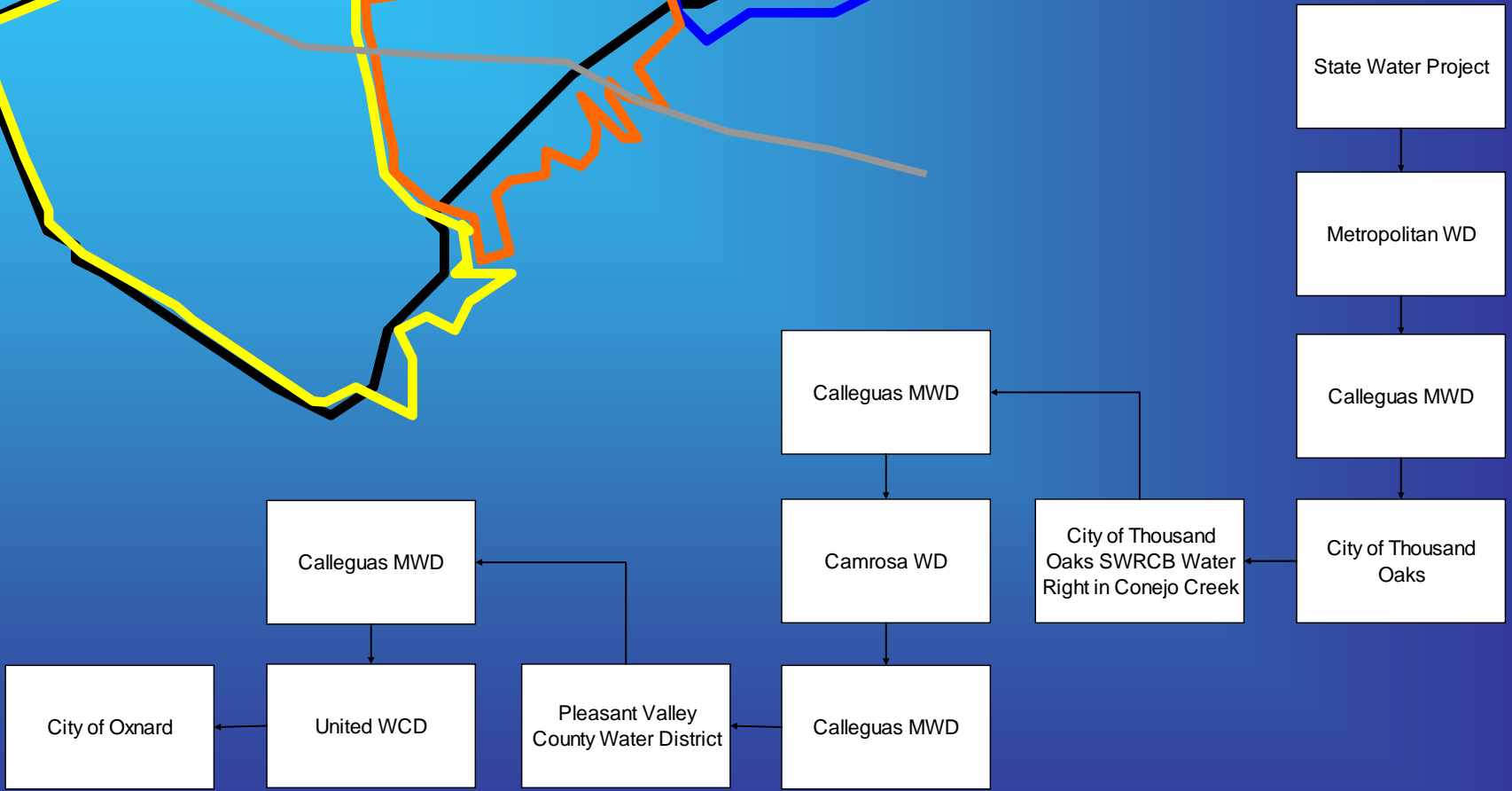
Booster Pump Station

AirPhotoUSA





Note: The graphic shows the outline of the FCGMA boundary in black and the Santa Rosa, Pleasant Valley, and Oxnard Basins outlined in blue, orange, and yellow respectively. This note did not appear in the presentation. The figure was used to illustrate movement of the Conejo Creek Project water from outside the GMA and across the basins within the GMA.



City of Camarillo

City of Thousand Oaks

23

101

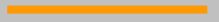
LEGEND

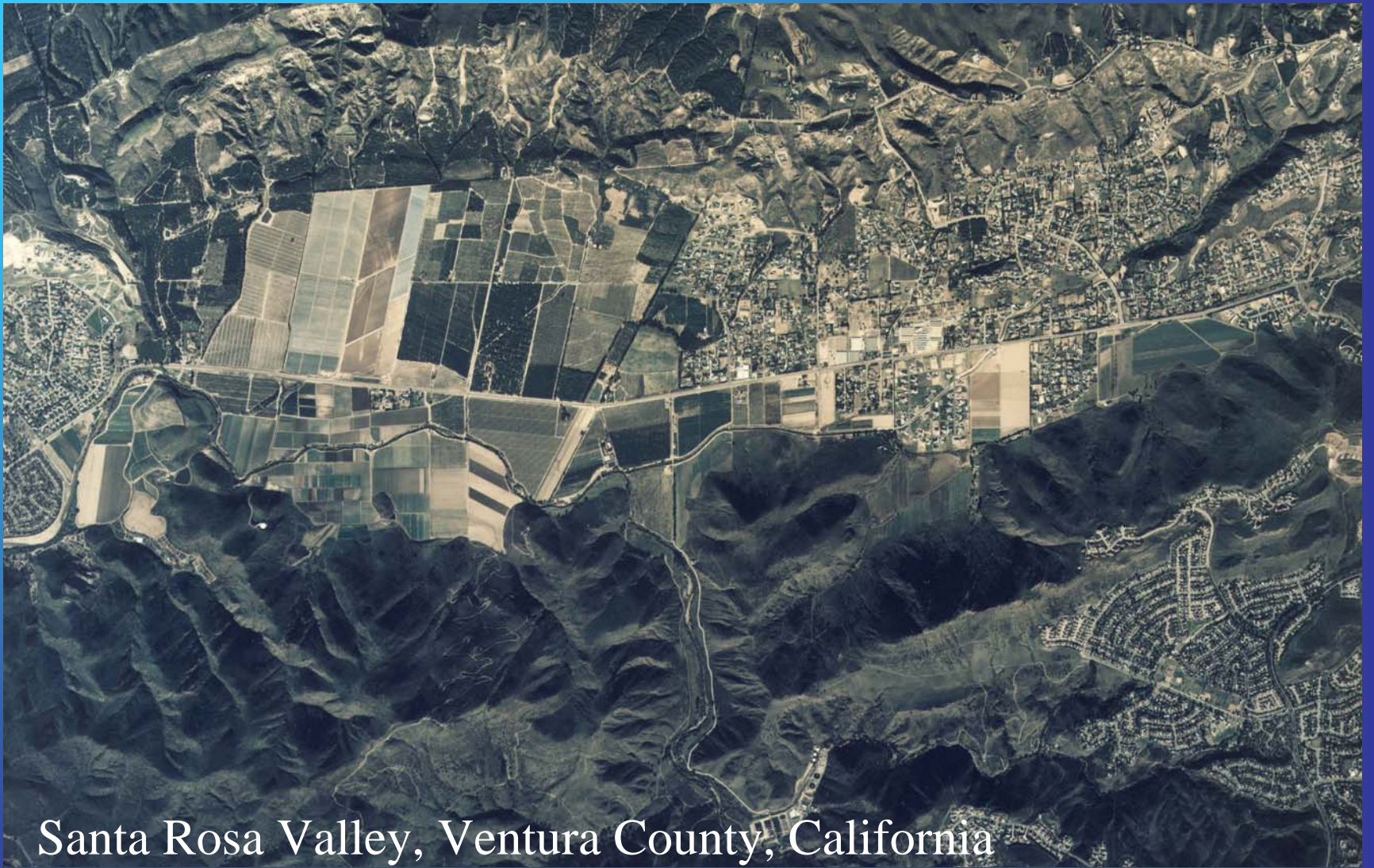
Pleasant Valley CWD (Conejo Creek Project Water)

Camrosa Water District Boundary

Camrosa Water Reclamation Facility Water Distribution

Camrosa Distribution of Conejo Creek Project Water





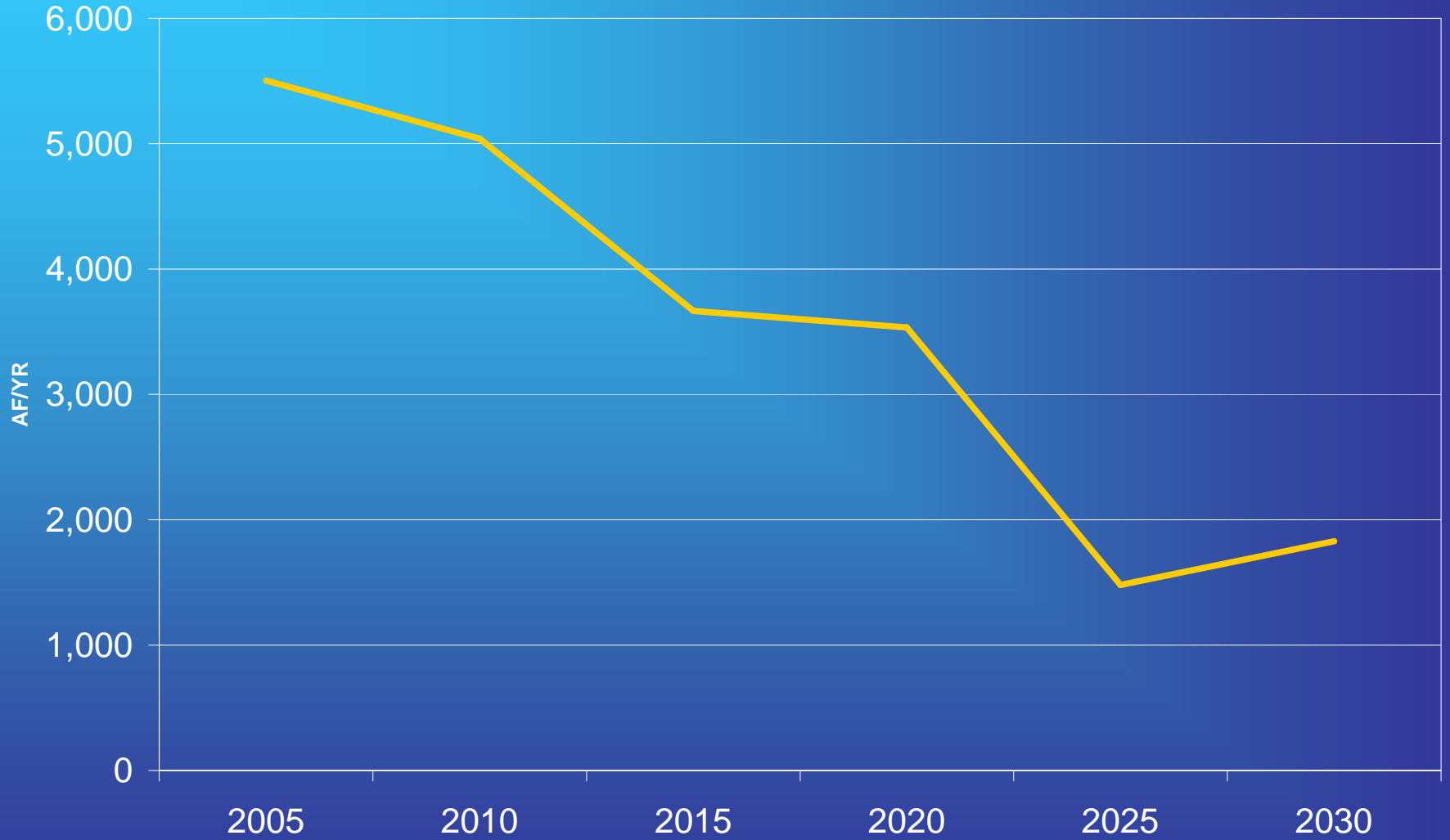
Santa Rosa Valley, Ventura County, California

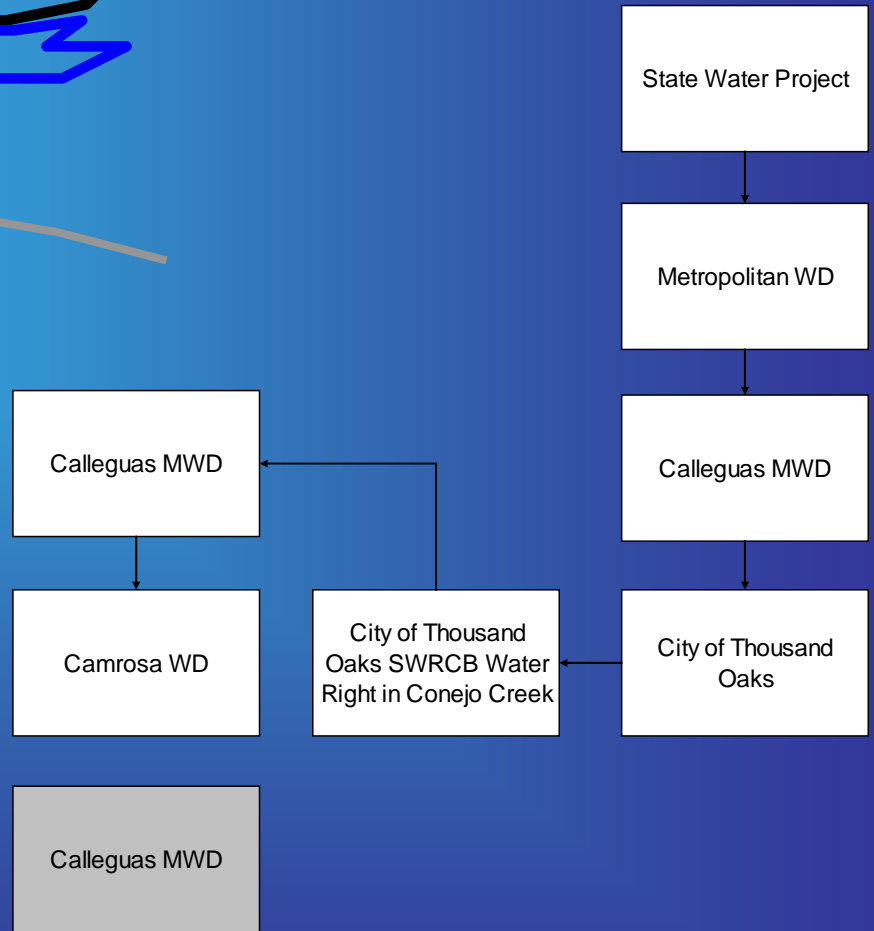
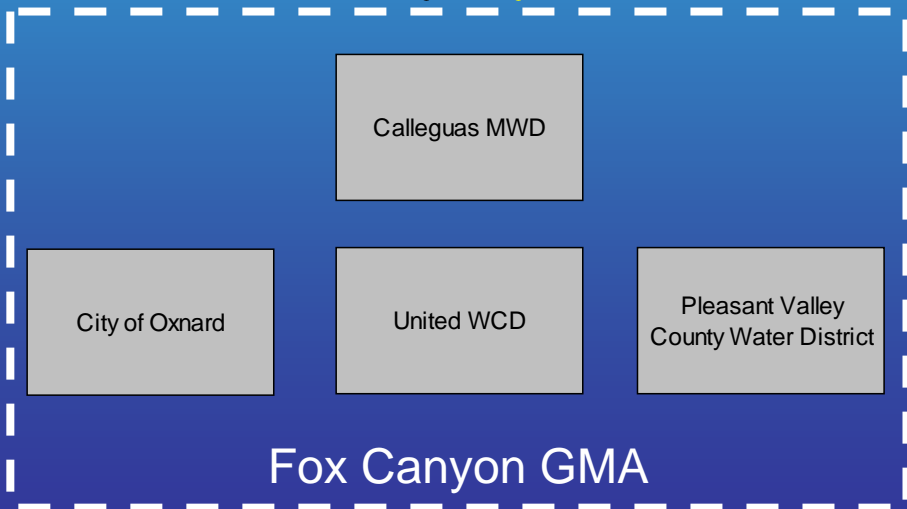
Projected Camrosa In-District Non-Potable Demands (all quantities in af/yr)							
From Table 20, Camrosa UWMP 2005							
Year	2005	2010	2015	2020	2025	2030	
Municipal & Industrial	566	1,600	3,070	3,500	3,700	3,800	
Agricultural	3,443	5,200	5,600	5,800	8,100	8,100	
Total Non-potable Demand	4,009	6,800	8,670	9,300	11,800	11,900	

Projected Non-Potable Water Supplies, From Table 7, Camrosa UWMP 2005 (all quantities in af/yr)							
Year	2005	2010	2015	2020	2025	2030	
Conejo Creek Diversion Project	7,862	9,939	10,336	10,734	11,131	11,529	
Camrosa Water Reclamation Facility	1,650	1,900	2,000	2,100	2,150	2,200	
Total Non-potable Supply	9,512	11,839	12,336	12,834	13,281	13,729	

Projected Surplus, based on water demand factors* from Table 14, Camrosa UWMP 2005, af/yr							
Year	2005	2010	2015	2020	2025	2030	
Average Year Surplus	5,503	5,039	3,666	3,534	1,481	1,829	
Very Wet Year Surplus	6,225	6,263	5,227	5,208	3,605	3,971	
Wet Year Surplus	5,864	5,651	4,446	4,371	2,543	2,900	
Dry Year Surplus	5,142	4,427	2,886	2,697	419	758	
Critically Dry Year Surplus	4,781	3,815	2,105	1,860	-643	-313	

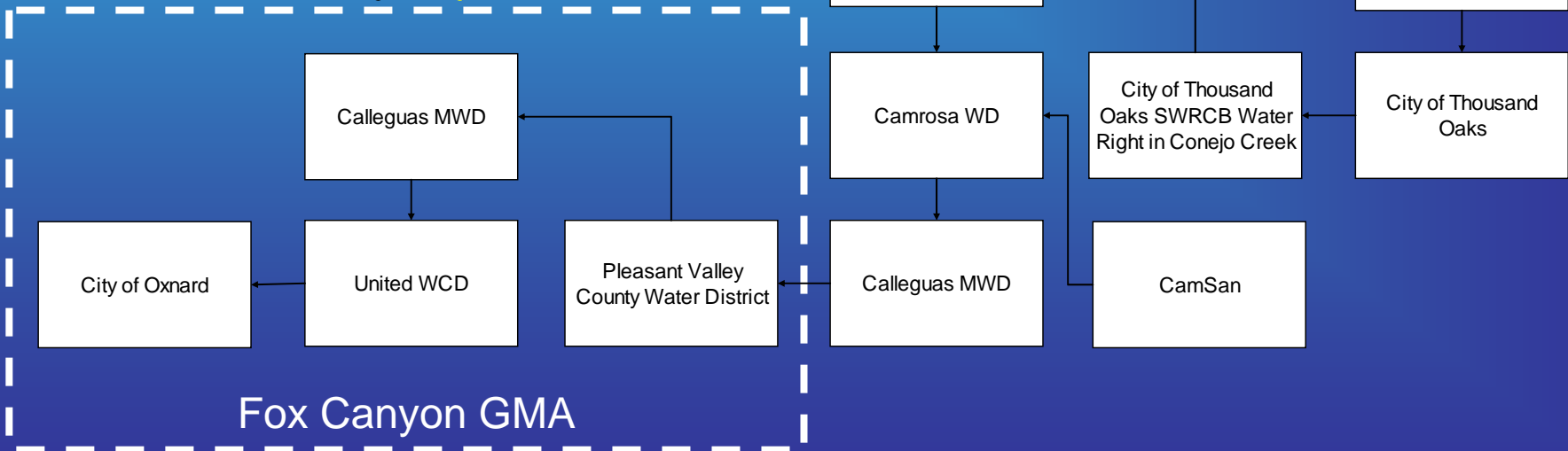
Projected Average Year CCP Deliveries to FCGMA



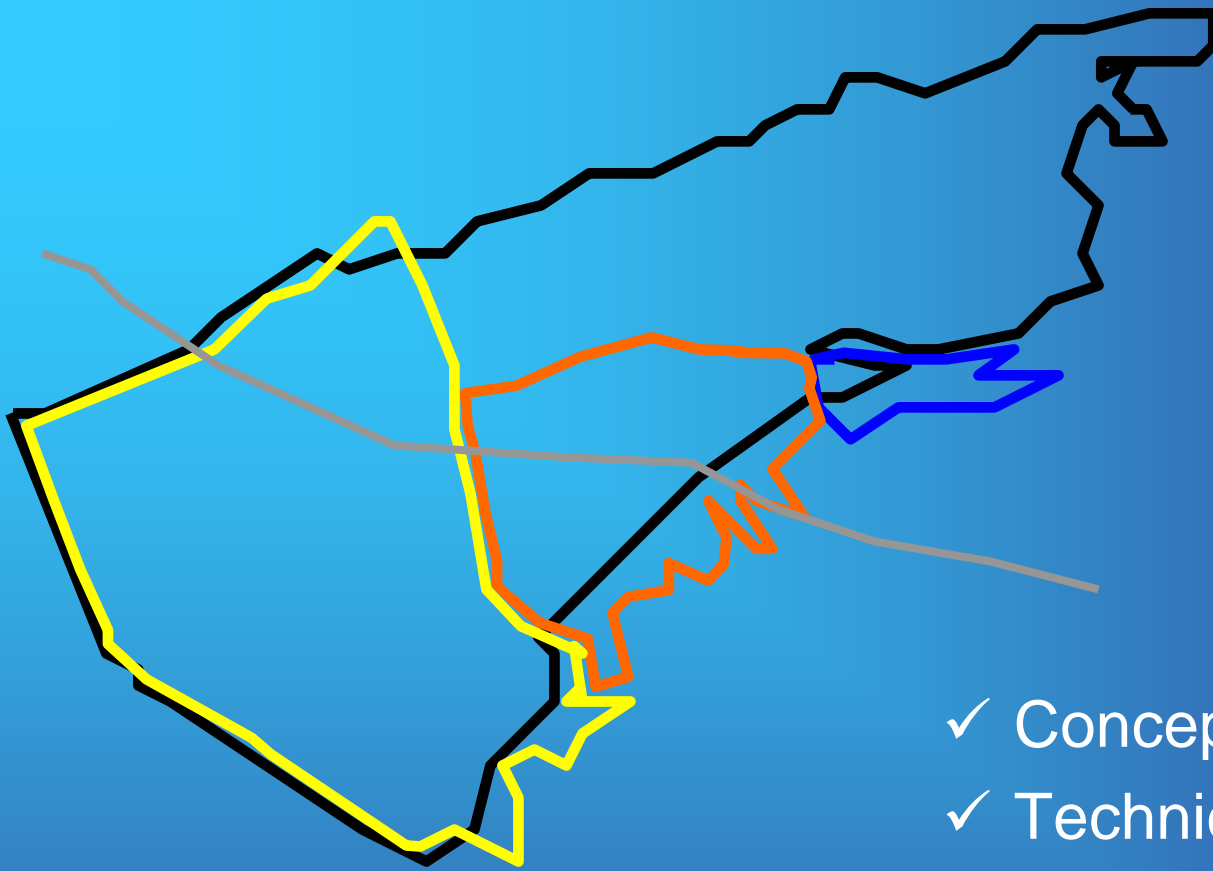




Pleasant Valley
County Water District,
Eastern Oxnard Plain,
Ventura County,
California



Fox Canyon GMA



- ✓ Conceptual Framework
- ✓ Technical Evaluation
- Negotiate Costs & Benefits Among Parties
- Consideration by GMA